

# StreamCaster® 4400 *Enhanced*

4x4 MIMO radio



...performance *ENHANCED*

**SILVUS**  
TECHNOLOGIES  
a Motorola Solutions Company



# STREAMCASTER 4400E



## GENERAL

MODEL NUMBER	NATIVE TX POWER	EFFECTIVE TX POWER
SC4480	User Adjustable	w/ Beamforming
SC44K0	1mW – 8W	Up to 32W
	1mW – 20W	Up to 80W
JETDAS MODEL	AN/PRC-169(v)1; AN/VRC-147(v)1; AN/VRC-147(v)2	
WAVEFORM	Mobile Networked MIMO (MN-MIMO)	
ENCRYPTION	DES56 (Standard) AES256 (Optional) FIPS 140-3 Level 2	
DATA RATE	Up to 100Mbps (Adaptive)	
MIMO TECHNIQUES	Spatial Multiplexing, Space-Time Coding, TX/RX Eigen Beamforming	
PUSH-TO-TALK VOICE	G.711/G.722/Opus Codec	
LATENCY	7ms average (20MHz BW)	
SENSITIVITY	-102dBm @ 5MHz BW -108dBm @ 1.25MHz BW (optional)	
FREQUENCY BANDS	Bands from 300MHz to 6GHz available	
CHANNEL BANDWIDTH (MHZ)	20/10/5 (2.5/1.25 Optional)	
SCALABILITY	550+ Nodes	

## SPECTRUM DOMINANCE 2.0

LPI/LPD, ANTI-JAM & ADVANCED THREAT PROTECTION CAPABILITIES

AVAILABLE FEATURES		
MANET Spectrum Analyzer (MAN-SA)		
MANET Power Control (MAN-PC)*		Wake on Wireless
MANET Interference Cancellation (MAN-IC)*		
MANET Interference Avoidance (MAN-IA)		Dual Frequency Link
MANET Protected Waveform (MAN-PW)*		
*ITAR Controlled		

## FREQUENCY BAND OPTIONS

(all bands listed in MHz; dual band configurations available)

BAND	CODE	RANGE	BAND	CODE	RANGE
UHF	034	300 - 380	BROADCAST	206	2025 - 2110
	042	400 - 450	S	225	2200 - 2300
	068	663 - 698		235	2200 - 2500
900 MHz ISM	091	902 - 928	2.4 GHz ISM	245	2400 - 2500
L	137	1350 - 1390	C	467	4400 - 4940
	139	1350 - 1440		470	4400 - 5000
	147	1452 - 1492		485	4700 - 5000
	150	1492 - 1525	PUBLIC SAFETY	512	4940 - 5300
	179	1790 - 1805	5 GHz ISM	520	5150 - 5250
	182	1790 - 1850		580	5725 - 5875

Note: If band of interest is not listed, please contact a sales representative



## MECHANICAL

OPERATING TEMPERATURE	-40° to +85° C
IP RATING	IP68 (Submersible to 20 meters for 30 min)
DIMENSIONS (SHORT FIN / LONG FIN)*	134 x 115 x 46 mm / 134 x 115 x 66 mm
WEIGHT (DUAL BAND) (SHORT FIN / LONG FIN)	861 grams / 1009 grams
MATERIAL	Black Anodized Aluminum

\* Without RF Connectors

## POWER

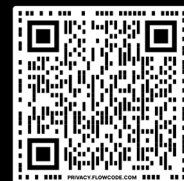
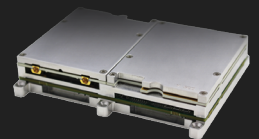
INPUT VOLTAGE	9 - 20 VDC
POWER CONSUMPTION	8W - 24W @ 1W TX Power 8W - 43W @ 8W TX Power 8W - 100W @ 20W TX Power

## INTERFACES

RF	4x TNC(f) N(f) Optional
PRIMARY	Ruggedized Push/Pull Connector 1x Ethernet, 1x RS232, DC Input
AUXILIARY	Ruggedized Push/Pull Connector 1x USB 2.0 Host, 1x USB 2.0 OTG
PTT (PUSH-TO-TALK)	Ruggedized Breakaway Connector
STATUS INDICATOR	Tri-Color LED
CONTROL INTERFACE	Multi-Position Switch 8 Presets Plus Zeroize Crypto Web-Based StreamScape Network Manager

## MECHANICAL - OEM VERSION

DIMENSIONS	109 x 84 x 21 mm
WEIGHT	258 g (288 g - Dual Band)
RF CONNECTORS	SMP (m)



Learn More

[www.silvustechonologies.com](http://www.silvustechonologies.com)

The following notice applies to the sale, lease, or offer of this device other than for use by the United States Government or for export: This device has not been authorized as required by the rules of the Federal Communications Commission. This device is not, and may not be, offered for sale or lease, or sold or leased, until authorization is obtained. Please contact Silvus for questions about the FCC approval status or requirements that pertain to this device including whether an FCC approved version is available. Exported devices are subject to the laws of the countries into which they are exported.