

# STREAMCASTER® TRINITY

## DUAL BAND MIMO TRANSCEIVER ARRAY



### Rapidly Deployable High Performance Mesh Network

Tactical Operations | Air-to-Ground Link | Fixed Infrastructure

Delivering high bandwidth, long-range communications in any environment, the StreamCaster TRINITY Dual Band MIMO Transceiver Array combines the performance of dual-band (S/C) StreamCaster MANET radios with a high-gain antenna array that delivers 360° of coverage for air and ground applications. Powered by Silvus' MN-MIMO waveform, StreamCaster TRINITY provides high data rate throughput at extended (50+ km) link range. Featuring flexible mounting options, StreamCaster TRINITY enables users to create rapidly deployable mesh networks for mobile, remote or fixed site operations.

**SILVUS**  
TECHNOLOGIES  
a Motorola Solutions Company

LEADING THE MIMO REVOLUTION

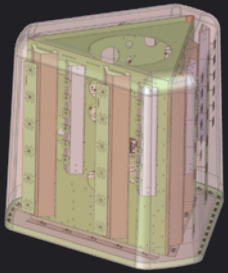
# STREAMCASTER TRINITY

## DUAL BAND MIMO TRANSCEIVER ARRAY

### Performance Flexibility to Match Your Mission

Featuring a unique high-gain Trilobe design, each of StreamCaster TRINITY's three 12 dBi sector antennas provide 120° of coverage, extending the range of multiple manned/unmanned air & ground assets in any direction. Use the three sectors all in the same band to achieve 360° of coverage, or in different S and C frequency bands to support individual sectors.

← 32" / 812mm →



↑ 25" / 635mm ↓

#### KEY FEATURES:

- Unique Trilobe Design – Built-in Dual S/C Band
- 12 dBi High-Gain Antennas – Achieve 360° of Coverage
- Network Flexibility – Independent 120° Sectors support Individual Networks
- Integrated SC4400E MANET Radios – Up to 20W output power per sector
- 50km+ Link Range – Create an operationally unified mesh network
- Rapidly Deployable (<60 min.) – Dual Case Packout
- Simplified Operations – Transportable to Fixed Site mounting options

#### Applications:



##### Defense

Command Center, At-the-Halt, Communications Relay



##### Law Enforcement

Extend the reach of the Tactical Bubble Mesh Network



##### Public Safety & Event Security

Disaster Response and Security Communications Network



##### Unmanned Systems & Broadcasting

C2 & Comms Relay – Connecting Multiple Operators & Platforms



#### Transceiver Array

Gain (dBi)	12
Horizontal Beamwidth	360°; 120° Per Sector
Vertical Beamwidth	11°
Polarization	Dual Slant (45°)
Link Distance	50+ km
Deployed Height	15 m
	Stationary; Telescoping Mast
Size	25"x28"x32"
Weight	80 lb.
Power Supply	AC or DC
Input Voltage Range	21V to 50V



#### StreamCaster 4400E

Radio Type	4x4 MIMO
Waveform	MN-MIMO
Output Power	Up to 20 Watts (up to 80 Watt effective w/TX Beamforming)
Data Rate	Up to 100 Mbps
Frequency Bands	Dual S/C Bands Built-In S-Band: 2200-2500 MHz C-Band: 4400-4940 MHz
Channel Bandwidth	20/10/5 MHz (2.5/1.25 Optional)

**SILVUS**  
TECHNOLOGIES  
a Motorola Solutions Company

[www.silvustechologies.com](http://www.silvustechologies.com)

The following notice applies to the sale, lease, or offer of this device other than for use by the United States Government or for export. This device has not been authorized as required by the rules of the Federal Communications Commission. This device is not, and may not be, offered for sale or lease, or sold or leased, until authorization is obtained. Please contact Silvus for questions about the FCC approval status or requirements that pertain to this device including whether an FCC approved version is available. Exported devices are subject to the laws of the countries into which they are exported.