

STREAMCASTER® MANET RADIOS

Loitering Munitions | C2 & Secure Comms Solutions



**The World's Most Advanced
Tactical MANET Radios**

**The Most Trusted Radio
For Loitering Munitions**

DESIGNED TO EXCEL WITHIN DYNAMICALLY CHANGING BATTLESPACES

The Silvus family of StreamCaster MANET radios provide secure and protected C2 and Communications for today's leading-edge Loitering Munition Systems (LMS) and attritable unmanned aircraft systems. Delivering class-leading range, scalability and throughput is why the majority of LMS manufacturers trust StreamCaster as their radio of choice for mission-critical applications.

At the heart of every StreamCaster MANET radio is Silvus' proprietary MN-MIMO waveform, capable of linking hundreds of nodes and operating in congested and contested environments.

Seamlessly interoperable with UAVs, LMS, Defense Sensors and Unified Communications Networks – StreamCaster MANET radios provide point-to-point and mesh network connectivity that delivers precision strike capabilities in any operational environment.

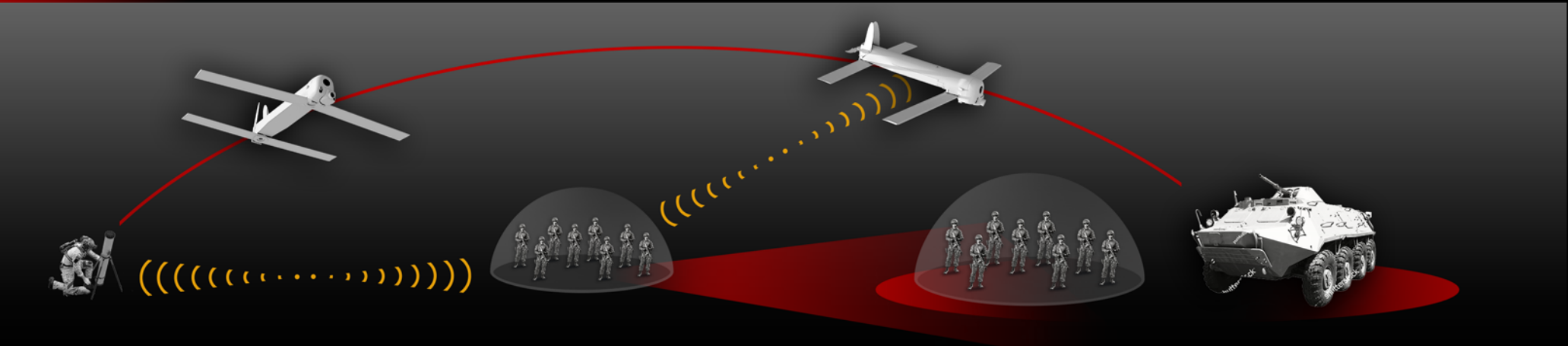
COORDINATED PRECISION STRIKE CAPABILITIES

NLOS COOPERATIVE ENGAGEMENT

Effective Range: 20+ km
Anti-Personnel/Anti-Armor

Silvus Delivery

- Secure & Protected C2 & Comms (LMS & Tactical Network)
- Forward Observer – LMS Hand-Off; RSTA/PID/Comms Relay
- LMS – ISR/RSTA/Comms Relay



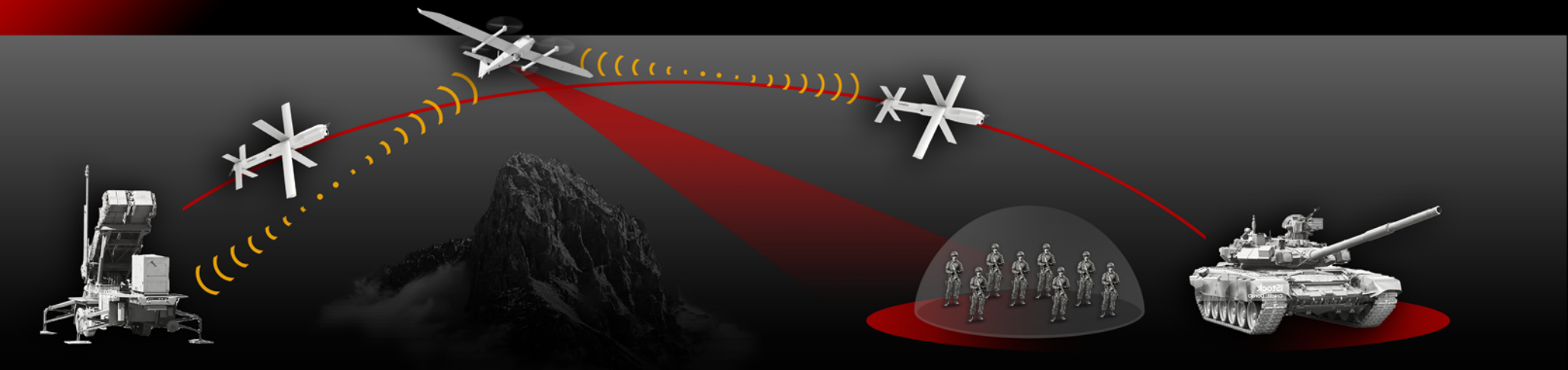
DEMONSTRATED PERFORMANCE AT ANY RANGE

BLOS ENGAGEMENT – AERIAL RELAY

Effective Range: 20-90+ km
Anti-Personnel/Anti-Armor

Silvus Delivery

- Secure & Protected C2 & Comms (LMS & HAPS/UAV)
- HAPS/UAV – ISR/RSTA/Comms Relay
- HAPS/UAV – Battle Damage Assessment (BDA)



Flexible & Interoperable Systems of Systems Applications
Manned/Unmanned Teaming



Silvus StreamCaster MANET Radios
Key Distinctions:

- Proven & Demonstrated Performance at 75 KM link Range with 10 Mbps (Direct Engagement)
- Scalable Multi-Domain Operations – Video, Flight Telemetry, Assured Voice & ROIP
- MANET Multicast – To enable one to many data distribution capabilities
- Frequency Agility – Dual Band Capability
- Seamless Radio Hand-off Capabilities – From FCS to forward Operator

SEAMLESS INTEGRATION DESIGN – MULTIPLE PLATFORMS & DISPARATE SYSTEMS
POWERFULLY SCALABLE MESH NETWORKS – SENSORS & PRECISION STRIKE MUNITIONS

STREAMCASTER SL5200

- Up to 2 Watts Output Power (4W Effective)
- Single/Dual Band (1350-1440MHz + 2200-2500MHz)
- 20/10/5 MHz Bandwidth (2.5/1.25 Option)
- Up to 100 Mbps Data Rate
- Interfaces – Ethernet, USB, RS232
- Encryption: AES256; FIPS 140-3

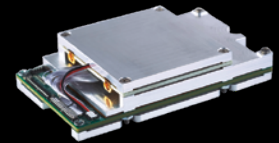


SL5200 OEM MODULE

SIZE	63.5 x 44.5 x 10.4 mm
WEIGHT	52 grams
RF CONNECTORS	SMP (m)

STREAMCASTER SC4200P

- Up to 10 Watts Output Power (20W Effective)
- Single/Dual Band Options (300MHz - 6GHz)
- 20/10/5 MHz Bandwidth (2.5/1.25 Option)
- Up to 100 Mbps Data Rate
- Interfaces – Ethernet, USB, RS232
- Encryption – AES 256; FIPS 140-3 Level 2

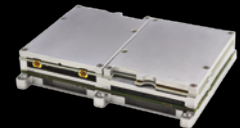


SC4200P OEM MODULE

SIZE	91.7 x 54.61 x 18.03 mm
WEIGHT	137 grams
RF CONNECTORS	SMP (m)

STREAMCASTER SC4400

- Up to 20 Watts Output Power (80W Effective)
- Single/Dual Band Options (300MHz - 6GHz)
- 20/10/5 MHz Bandwidth (2.5/1.25 Option)
- Up to 100 Mbps Data Rate
- Interfaces – Ethernet, USB, RS232
- Encryption – AES 256; FIPS 140-3 Level 2



SC4400 OEM MODULE

SIZE	109 x 84 x 21 mm
WEIGHT	288 grams
RF CONNECTORS	SMP (m)

SPECTRUM DOMINANCE 2.0

Achieve RF Spectrum Overmatch in any Operational Environment with access to an ever-expanding suite of LPI/LPD, Anti-Jamming and Advanced Threat Protection Capabilities

- Secure and Protected Comms without Sacrificing Performance
- Designed to thrive in Congested & Contested EW Environments
- Achieve mission objectives even under Electronic Attack
 - MANET Power Control (MAN-PC)*
 - Wake on Wireless
 - MANET Interference Cancellation (MAN-IC)*
 - MANET Interference Avoidance (MAN-IA)
 - Dual Frequency Link
 - MANET Protected Waveform (MAN-PW)*

* ITAR Controlled

P: 310.479.3333
W: www.silvustechologies.com
E: Info@silvustechologies.com
A: 10990 Wilshire Blvd., Suite 1600
Los Angeles, CA 90024

SILVUS
TECHNOLOGIES
a Motorola Solutions Company

Contact:
E: unmanned@silvustechologies.com

