

STREAMCASTER PRISM

PRECISION INTEGRATED SECTORIZED MIMO



STREAMCASTER PRISM

PRECISION INTEGRATED SECTORIZED MIMO ANTENNA RADIO SYSTEMS

StreamCaster PRISM's streamlined modularity maximizes mission performance.

Choose from multiple component options to easily create a custom configuration that matches your mission.

COMPONENT SPECS

POLE MOUNTING BRACKET



4-WAY



3-WAY



1-WAY

PART NUMBER	MPS-4W-CLAMP	MPS-3W-CLAMP	MPS-1W-CLAMP
POLE DIAMETER	3.5" & 2.0"	3.5" & 2.0"	3.5" & 2.0"
WEIGHT	2.0 kg / 4.3 lb.	1.7 kg / 3.7 lb.	1.2 kg / 2.6 lb.
SECTOR SPACING	90°	120°	N/A

POWER CONVERTERS



200W DC-DC CONVERTER



PRISM POWER UNIT (PPU)

PART NUMBER	SC-DC-PWR-RGD-200-2150-18V	PPU-DC-1000-2150-18V
RADIO PORTS	1	8
POWER CAPACITY	200W	1000W
INPUT VOLTAGE RANGE	21V TO 50V	
OUTPUT VOLTAGE	18VDC	
DIMENSIONS	5.4" x 4.5" x 1.9"	8.3" x 7.8" x 4.4"
WEIGHT	1.4 lb.	6.3 lb.

AC POWER SUPPLY



PART NUMBER	HP-AC-PWR-RGD-500-48V(T)
POWER CAPACITY	500W
INPUT VOLTAGE RANGE	100-277VAC
POWER OUTPUT	48VDC @ 10.4A
IP RATING	IP-67
DIMENSIONS	12.6" x 5" x 1.8"
WEIGHT	7.4 lb.
PLUG TYPE	Type B NA

DOWNMAST CABLE



PART NUMBER	HP-DCE-EQP-CAP-20	HP-DCE-EQP-CAP-50	HP-DCE-EQP-CAP-75	HP-DCE-EQP-CAP-125	HP-DCE-EQP-CAP-165
LENGTH	20 ft.	50 ft.	75 ft.	125 ft.	165 ft.

RADIO DATA/POWER DISTRIBUTION CABLE



PART NUMBER	SC-PRICBL-HP-4LH(T)
LENGTH	4 ft.

RF CABLE



PART NUMBER	*CBL240-RANMRATM-x-xx
LENGTH	*Varies

POWER & ETHERNET SPLITTER CABLE



PART NUMBER	HP-DCE-SPLTR-6
LENGTH	6 ft.

Specifications shown in this brochure subject to change

*Please contact Silvus.



Silvus Technologies, Inc.
10990 Wilshire Blvd. Suite 1600
Los Angeles, CA 90024

Tel: 310.479.3333
Email: info@silvustechnologies.com
www.silvustechnologies.com



Modular Design | Rapidly Deployable | Unrivaled Coverage & Range

STREAMCASTER PRISM

PRECISION INTEGRATED SECTORIZED MIMO

ANTENNA RADIO SYSTEMS

BAND/GAIN/BEAMWIDTH OPTIONS

Tactical Operations | At-the-Halt | Fixed Infrastructure

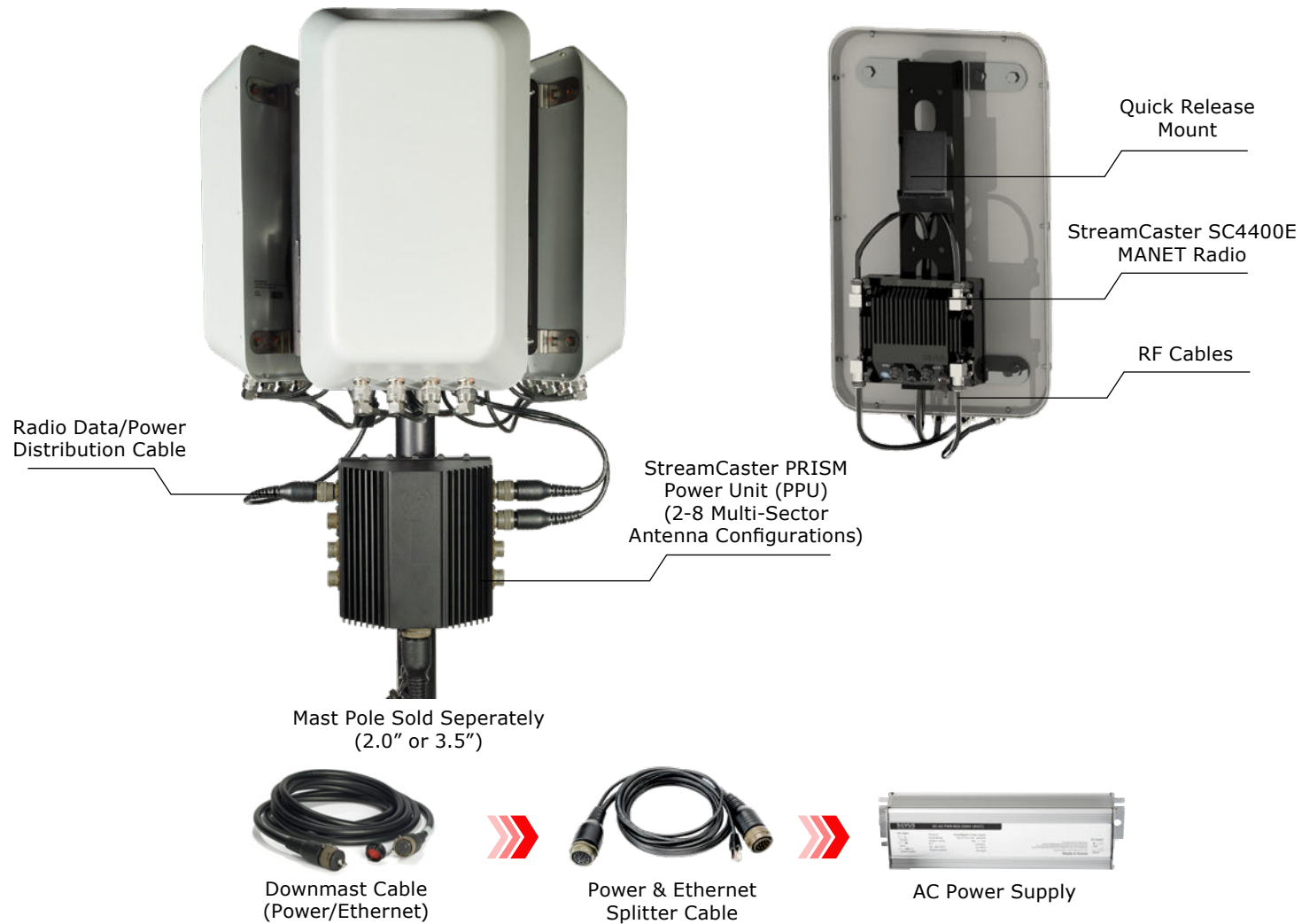
The Silvus StreamCaster PRISM family of Integrated Antenna Radio Systems is a modular solution providing long-range sectorized coverage across wide areas of operation. Rapidly deployable with toolless setup and ruggedized construction, StreamCaster PRISM delivers operational flexibility with unrivaled coverage and range. A single sector can be deployed tactically on masts to create a long-range UAS ground control station, or multiple sectors can be permanently installed on rooftops, mountain peaks, or towers to create a strategic communications infrastructure for citywide mesh networks or border security operations.

StreamCaster PRISM combines the performance of StreamCaster MANET radios providing up to 20W output power (80W effective radiated power thanks to TX Eigen Beamforming) and up to 100 Mbps data throughput, with high-gain, dual polarity sector antennas to deliver up to 360° of coverage for air and ground applications.

STREAMCASTER PRISM DEPLOYMENT KIT

MODEL SHOWN 12C120

Includes everything you need to assemble, install and rapidly deploy.



MODEL NAME	12L120	15S90	12S120	16C90	12C120	12SC90
ANTENNA KIT P/N	AS4DI2SI40-NF/P	AS4DI5S235-NF/P	AS4DI2S235-NF/P	AS4DI6S470-NF/P	AS4DI2S470-NF/P	AS4DIID12-235470-NF/P
FREQUENCY BAND(S)	1350-1450 MHz	2200-2500 MHz	2200-2500 MHz	4400-5000 MHz	4400-5000 MHz	2200-2500 MHz + 4400-5000 MHz
GAIN (dBi)	12	15	12	16	12	11/12
HORIZONTAL BEAMWIDTH	120°	90°	120°	90°	120°	90°
VERTICAL BEAMWIDTH	10°	8°	12°	8°	12°	9° for S-Band, 11° for C-Band
DIMENSIONS	47.3" x 27.3" x 7.9"	36" x 10" x 3.5"	26" x 16.5" x 4.2"	20.5" x 10" x 3"	16.5" x 10" x 4"	20.5" x 11.0" x 3.0"
ANTENNA KIT WEIGHT	34 lb.	14.5 lb.	13.1 lb.	9.2 lb.	8.4 lb.	9.0 lb.

StreamCaster PRISM – Maximize Operational Effectiveness

Economical Packout

Reduced Operational Footprint

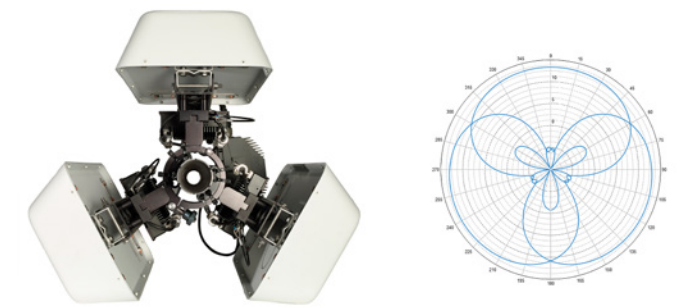


Antenna Transit Case

Accessories Case

Extend the Range of Your Network

Achieve Blanket of Coverage Throughout your Area of Operation



Multi-Sector Coverage (Up to 360°)