

StreamCaster[®] Lite 4200

2x2 MIMO Radio

50% THINNER* | 30% LIGHTER*

...100% SILVUS



SILVUS
TECHNOLOGIES

LEADING THE MIMO REVOLUTION



NIST



*Compared to SC4200

STREAMCASTER LITE



GENERAL

WAVEFORM	Mobile Networked MIMO (MN-MIMO)
ENCRYPTION	DES56 (Standard) AES256 (Optional) FIPS 140-3 Level 2
DATA RATE	Up to 20Mbps (Adaptive)
MIMO TECHNIQUES	Spatial Multiplexing, Space-Time Coding, TX/RX Eigen Beamforming
OUTPUT POWER	1mW - 1W variable (up to 2W effective w/TX Beamforming)
LATENCY	28ms average (5MHz BW)
SENSITIVITY	-105dBm @ 1.25MHz BW
CHANNEL BANDWIDTH	1.25, 2.5, or 5 MHz
DIAGNOSTICS	Spectrum Scanning, Statistics Logging, Temperature/Voltage Monitoring

MECHANICAL

OPERATING TEMPERATURE	-40° to +85° C
IP RATING	IP67 (Up to 1m for 30min)
DIMENSIONS	140 x 72 x 20 mm (with connectors)
WEIGHT	295 grams
MATERIAL	Black Anodized Aluminum

POWER

INPUT VOLTAGE	8-32 VDC or USB-PD (9V@3A min)
POWER CONSUMPTION	4.8W-17W @ 1W TX Power

INTERFACES

RF	2xTNC(f)
DATA	1x USB 2.0 Host; 1x USB 2.0 OTG; 1xSerial RS-232
CONNECTOR	Proprietary 20-pin side-connector
STATUS INDICATOR	Bi-Color LED
CONTROL INTERFACE	2-Position ON/OFF Switch Web-Based StreamScape Network Manager

SPECTRUM DOMINANCE – LPI/LPD & ANTI-JAM CAPABILITIES

AVAILABLE FEATURES	BETA FEATURES
MANET Spectrum Analyzer (MAN-SA)	Silent Mode (RX Only)
MANET Power Control (MAN-PC)*	True Broadcast
MANET Protected Waveform (MAN-PW)*	Dual Frequency Link (TX/RX)
MANET Interference Cancellation (MAN-IC)*	
MANET Interference Avoidance (MAN-IA)	

*ITAR Controlled

FREQUENCY BAND OPTIONS

(all bands listed in MHz)

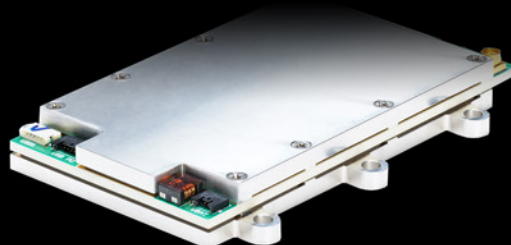
BAND	RANGE	BAND	RANGE
L BAND (139) *	1350 - 1440	FEDERAL C-1 (467)	4400-4940
S BAND (235)	2200-2500		

* In development

MECHANICAL - OEM VERSION

(shown below)

DIMENSIONS	97 x 70 x 11.3 mm
WEIGHT	105 grams
I/O CONNECTORS	Qty 6, Molex style (Power, data, status, control)
RF CONNECTORS	2x SMP (m)



www.silvustechologies.com

The following notice applies to the sale, lease, or offer of this device other than for use by the United States Government or for export: This device has not been authorized as required by the rules of the Federal Communications Commission. This device is not, and may not be, offered for sale or lease, or sold or leased, until authorization is obtained. Please contact Silvus for questions about the FCC approval status or requirements that pertain to this device including whether an FCC approved version is available. Exported devices are subject to the laws of the countries into which they are exported.